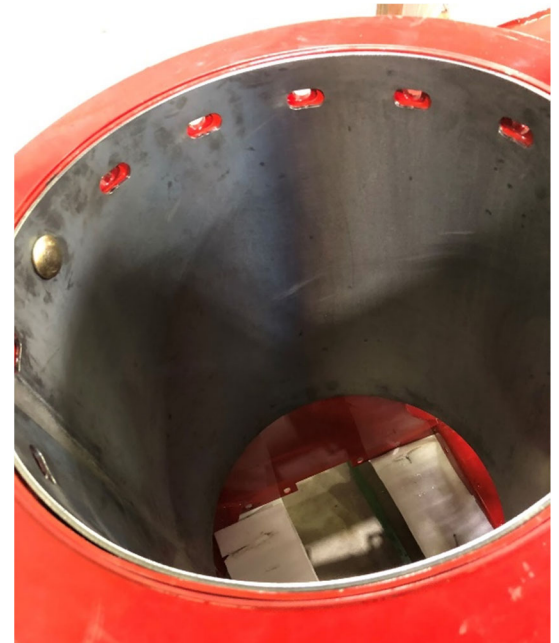


VERTICAL UNLOAD LINER

Installation Instructions:

◆ *Hand and eye protection recommended when working with sharp edges*

1. Remove cast elbow on top of vertical unload.
2. Remove all the bolts that hold the cast ring in place.
3. Remove gear box on the bottom of the unload vertical/remove auger.
4. Slide liner in and make sure it is lined up with all the openings.
5. Install the cast ring and bolts back in through the new steel liner.
6. Pry the liner outward with a short 2x4 wedge tightly so that it pushes the liner outward. Do this in several spots, then tack the weld liner in multiple spots, and tighten the bolts.
7. Finish completely welding the liner so there is no edge exposed and weld the vertical seam shut. This is to protect the grain from getting behind it.
8. Install wear plates in the bottom of the grain tank lining up all pieces and welding solid.
9. The triangle pieces go at the bottom 2 corners of the big plate with the cut out in it which is for the door.



30, 40, 50 Series
PN/0001/FSVT/40

→ *For questions on installing call 515-249-3877*