



# REMAN WEAR PARTS CATALOG

CNH Reman Wear Parts by Ihle Fabrications  
are made by farmers with high-quality steel and  
backed by an industry leading 24-Month Warranty.

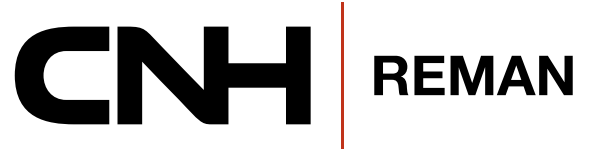
**CNH** | REMAN **IHLE FABRICATIONS LLC®**

Visit your local dealership today.

**CASE IH**

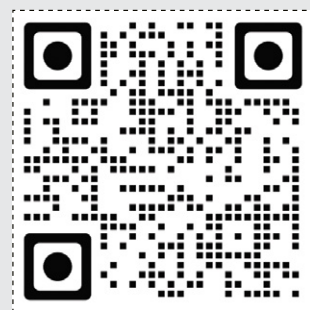
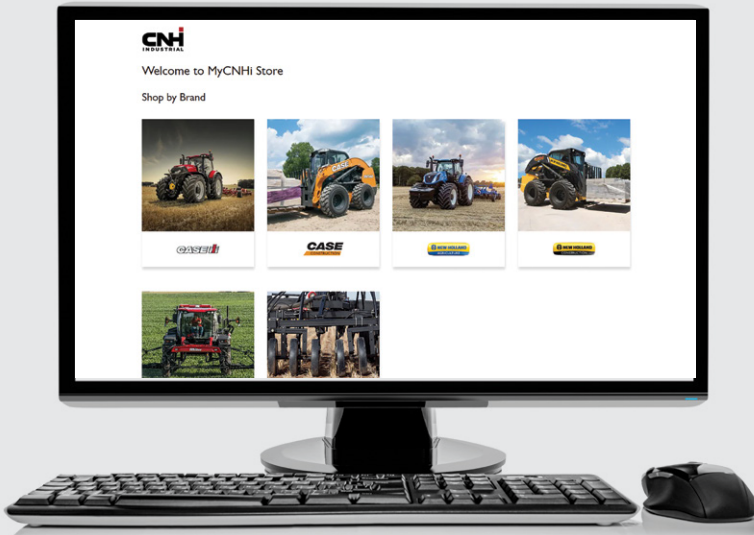
# About Us

Today, there are more reasons than ever to choose CNH Reman parts for your equipment. From more product offerings to less downtime during installation, you're sure to appreciate the unique benefits of choosing Reman. If you're new to CNH remanufactured parts, there are some great reasons to make our parts a key element in your ongoing equipment maintenance program.



Ihle Fabrications is a farmer-built company in Polk City, IA that is a leading provider in manufacturing agriculture wear parts for combines and other equipment. Started in 2002 on a family farm, Ihle has since grown into a Certified Case IH Reman supplier with over 400 dealers, 300 ag part offerings, 40 employees and four countries in which they sell. For more information about Ihle Fabrications, visit [www.ihlefabrications.com](http://www.ihlefabrications.com).

## Learn More About CNH Reman Wear Parts by Ihle Fabrications.



Scan QR Code to start buying your wear parts now!

# BOOST EFFICIENCY & DURABILITY WITH **CUTTING-EDGE** STEEL

Harvesting environments can place significant demands on equipment. The choice of materials for parts is crucial, as it directly affects the performance and durability of a combine, especially when dealing with heavy loads, abrasion, and harsh conditions.

CNH Reman Wear Parts by Ihle Fabrications are made by farmers with high-quality steel options including Hardox® 450, Strenx® 110, and various stainless-steel grades.

## **HARDOX**® WEAR PLATE

The unmatched strength of Hardox® 450 is an industry leading wear-resistant steel manufactured by SSAB and its key attributes make it an excellent choice for harvesting applications.

### **Unmatched Strength**

Allows for increased load-bearing capacity and structural integrity during intense harvesting operations with a nominal hardness of 450 HBW and a yield strength of approximately 1200 MPa.

### **Abrasion**

Its wear-resistant properties protect combine components from wear, impact, and material loss while extending durability, reducing maintenance costs, and improving overall machine performance.

### **Reduced Weight**

Hardox® 450 is lighter weight than traditional steels, contributing to fuel efficiency, and increased payload capacity.

## **STRENX**® PERFORMANCE STEEL

Strenx® 110, another high-strength structural steel from SSAB, offers specific benefits for combines.

### **Exceptional Strength**

Exceptional strength of 1100 MPa, provides extraordinary structural integrity and load-bearing capabilities and provides higher resistance to bending, twisting, and other mechanical stresses experienced during harvesting operations.

### **Formation and Weldability**

Strenx® 110 offers ease of fabrication and repair with the ability to be welded using common methods without being affected by high strength and retaining good form.

### **Optimal Toughness**

A minimum yield strength of 100 ksi enables it to withstand impacts and shocks inherent in the harvesting environment, ensuring reliable performance and reducing the risk of downtime due to equipment failures or component damage.

---

By choosing the right steel option for combine components, farmers and Case IH Dealerships can enhance productivity, reduce maintenance costs, and achieve optimal results in the field.

# COMBINE WEAR PARTS



## **SMALL FRAME LEGACY**

1420, 1440, 1460, 1470, 1620,  
1640, 1644, 1660, 1666, 1670,  
2144, 2166, 2344, 2366

## **LARGE FRAME LEGACY**

1480, 1680, 1688, 2188,  
2377, 2388, 2577, 2588

## **MIDRANGE**

5088, 5130, 5140, 5150, 6088,  
6130, 6140, 6150, 7088, 7130,  
7140, 7150

## **NARROW FRAME FLAGSHIP**

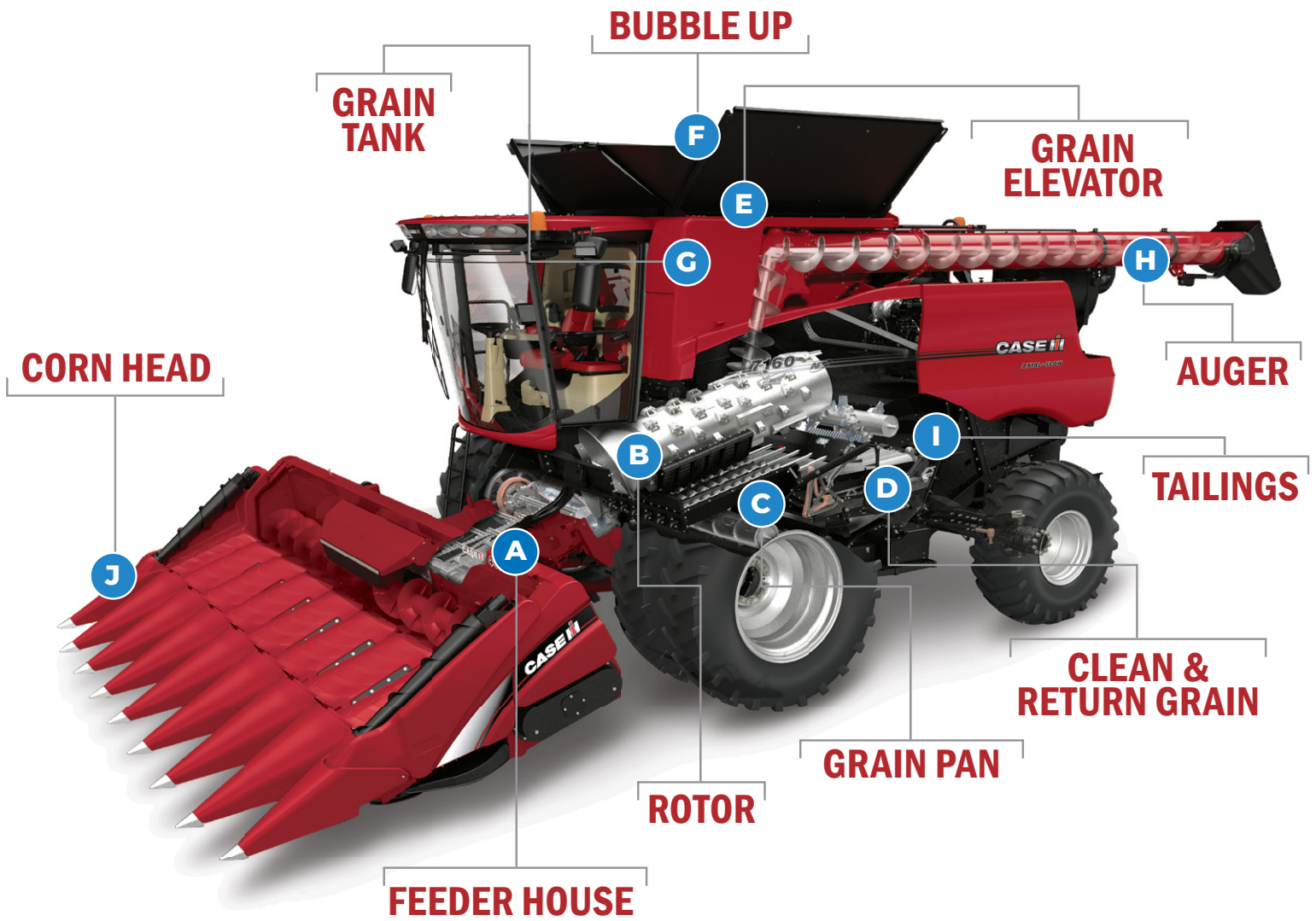
7010, 7120

## **EARLY FLAGSHIP**

8010, 8120, 9010, 9120, AFX8010 &  
(7230, 8230, 9230, Before Serial #YDG222000)

## **LATE FLAGSHIP**

7240, 7250, 8240, 8250, 9240, 9250 &  
(7230, 8230, 9230, After Serial #YDG222000)



**A. FEEDER HOUSE**.....pg. 06

**B. ROTOR**.....pg. 09

**C. GRAIN PAN**.....pg. 12

**D. CLEAN & RETURN GRAIN**.....pg. 13

**E. GRAIN ELEVATOR**.....pg. 16

**F. BUBBLE UP**.....pg. 18

**G. GRAIN TANK**.....pg. 19

**H. AUGER**.....pg. 22

**I. TAILINGS**.....pg. 24

**J. CORN HEAD**.....pg. 26

# FEEDER HOUSE WEAR PARTS

Your combine's feeder house is the heart of your harvest, so keeping it in top condition is crucial for a smooth operation. At CNH Reman, we understand how important it is to maintain your equipment. Our high-quality parts paired with regular maintenance ensure a steady crop flow, reducing the risk of breakdowns during your harvest season.



- **Feeder House Liner Kit** – Made with Hardox® 450
- **Feeder House Door Cover** – Made with Hardox® 450
- **Feeder Drum Parts** – Made with Strenx® 110
- **Front Tilt Feeder Plate** - Made with Hardox® 450
- **Feeder Pivot Brake Stripper** - Made with Hardox® 450

## FEEDER HOUSE LINER KIT - MADE WITH **HARDOX® 450**



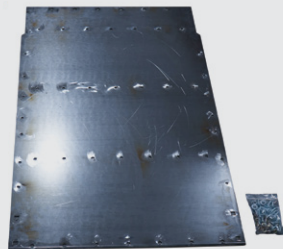
**REMAN#:** 73399543R  
**IF#:** IF1224A53F

**DESCRIPTION:**  
51- 1/4" x 35-9/16" for 54" floor

**MODEL FAMILY:**  
SMALL FRAME LEGACY

**MODEL FITMENT:**  
Combines w/ Rock Trap:  
1420, 1440, 1460, 1620,  
1640, 1644, 1660, 1666,  
2144, 2166, 2344, 2366

**ADDITIONAL PART(S)  
RECOMMENDATION:**  
73399578R (pg. 8)



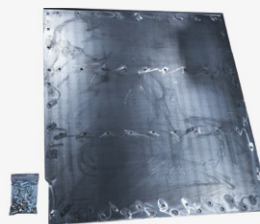
**REMAN#:** 73399544R  
**IF#:** IF1224B53F

**DESCRIPTION:**  
56-3/4" x 35-9/16" for 60" floor

**MODEL FAMILY:**  
SMALL FRAME LEGACY

**MODEL FITMENT:**  
Combines w/o Rock trap:  
1420, 1440, 1460, 1620, 1640,  
1644, 1660, 1666, 2144,  
2166, 2344, 2366

**ADDITIONAL PART(S)  
RECOMMENDATION:**  
73399578R (pg. 8)



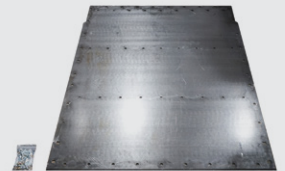
**REMAN#:** 73399545R  
**IF#:** IF1234A53F

**DESCRIPTION:**  
51- 1/4" x 44-3/4" for 54-1/2" floor

**MODEL FAMILY:**  
LARGE FRAME LEGACY

**MODEL FITMENT:**  
Combines w/ Rock Trap:  
1480, 1680, 1688, 2188,  
2388, 2377, 2577, 2588

**ADDITIONAL PART(S)  
RECOMMENDATION:**  
73399578R (pg. 8)



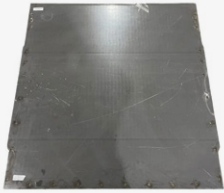
**REMAN#:** 73399546R  
**IF#:** IF1234B53F

**DESCRIPTION:**  
56-3/4" x 44-3/4" for 60" floor

**MODEL FAMILY:**  
LARGE FRAME LEGACY

**MODEL FITMENT:**  
Combines w/o Rock Trap:  
1480, 1680, 1688, 2188,  
2388, 2377, 2577, 2588

**ADDITIONAL PART(S)  
RECOMMENDATION:**  
73399578R (pg. 8)



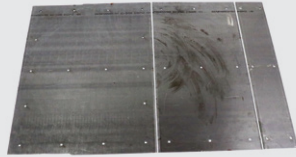
**REMAN#:** 73399541R  
**IF#:** IF1114A53K

**DESCRIPTION:**  
45-18/25" x 44-1/8"  
Made with Hardox®

**MODEL FAMILY:**  
MIDRANGE

**MODEL FITMENT:**  
Combines w/ Rock Trap  
5088, 6088, 7088

**ADDITIONAL PART(S)  
RECOMMENDATION:**  
87748011R (pg. 8)



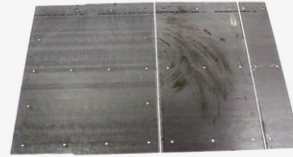
**REMAN#:** 73399542R  
**IF#:** IF11E4A53K

**DESCRIPTION:**  
3 piece kit

**MODEL FAMILY:**  
FLAGSHIP

**MODEL FITMENT:**  
Combines w/ Rock Trap  
7250, 8250, 9250

**ADDITIONAL PART(S)  
RECOMMENDATION:**  
73399577R (pg. 8),  
73399580R (pg. 8)



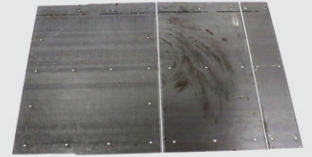
**REMAN#:** 73399547R  
**IF#:** IF1444A53K

**DESCRIPTION:**  
3 piece kit

**MODEL FAMILY:**  
FLAGSHIP

**MODEL FITMENT:**  
Combines w/ RockTrap  
7010, 7120, 7230, 7240,  
8010, 8120, 8230, 8240,  
9120, 9230, 9240, AFX8010

**ADDITIONAL PART(S)  
RECOMMENDATION:**  
73399577R (pg. 8),  
73399580R (pg. 8)



**REMAN#:** 73399548R  
**IF#:** IF1444B53K

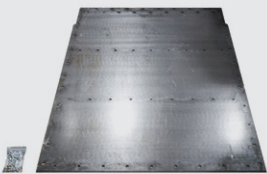
**DESCRIPTION:**  
3 piece kit

**MODEL FAMILY:**  
FLAGSHIP

**MODEL FITMENT:**  
Combines w/o Rock Trap  
7010, 7120, 7230, 7240,  
8010, 8120, 8230, 8240,  
9120, 9230, 9240, AFX8010

**ADDITIONAL PART(S)  
RECOMMENDATION:**  
73399577R (pg. 8),  
73399580R (pg. 8)

## FEEDER HOUSE DOOR COVER MADE WITH **HARDOX® 450**



**REMAN#:** 73399588R  
**IF#:** IF1114B53KF

**DESCRIPTION:**  
51.24" x 43.30"

**MODEL FAMILY:**  
MIDRANGE

**MODEL FITMENT:**  
Combines w/o Rock Trap:  
5088, 6088, 7088

Combines w/ Rock Trap  
5130, 5140, 5150, 6130, 6140,  
6150, 7130, 7140, 7150

**ADDITIONAL PART(S)  
RECOMMENDATION:**  
87748011R (pg. 8)



**REMAN#:** 87283147R  
**IF#:** IF1120074K

**DESCRIPTION:**  
6 Holes, Kit w/Bolts

**MODEL FAMILY:**  
FLAGSHIP

**MODEL FITMENT:**  
7010, 7120, 7230, 8010, 8120,  
8230, 9120, 9230, AFX8010



**REMAN#:** 47765786R  
**IF#:** IF11E0074K

**DESCRIPTION:**  
8 Holes, Kit w/ Bolts

**MODEL FAMILY:**  
FLAGSHIP

**MODEL FITMENT:**  
7230, 7240, 8230, 8240, 9230, 9240

## FEEDER DRUM PARTS MADE WITH STRENX® 110



**REMAN#:** 73399577R  
**IF#:** IF1125354F

**DESCRIPTION:**  
Chain Guides - 8 Pieces

**MODEL FAMILY:**  
FLAGSHIP

**MODEL FITMENT:**  
7010, 7120, 7230, 7240, 7250,  
8010, 8120, 8230, 8240, 8250,  
9010, 9120, 9230, 9240,  
9250, AFX8010

**ADDITIONAL PART(S)  
RECOMMENDATION:**  
73399542R (pg. 7), 73399547R  
(pg. 7), 73399548R (pg. 8),  
73399580R (pg. 8)



**REMAN#:** 73399578R  
**IF#:** IF1145354F

**DESCRIPTION:**  
Stone Retarder Drum  
Service Kit - 6 pieces

**MODEL FAMILY:**  
LEGACY

**MODEL FITMENT:**  
1420, 1440, 1460, 1480, 1620,  
1640, 1644, 1660, 1666, 1670,  
1680, 1688, 2144, 2166, 2188,  
2344, 2366, 2377, 2388,  
2577, 2588

## FRONT TILT FEEDER PLATE MADE WITH HARDOX® 450



**REMAN#:** 73399580R  
**IF#:** IF1365374F

**DESCRIPTION:**  
Weld In

**MODEL FAMILY:**  
FLAGSHIP

**MODEL FITMENT:**  
7010, 7120, 7230, 7240, 7250,  
8010, 8120, 8230, 8240, 8250,  
9010, 9120, 9230, 9240,  
9250, AFX8010

**ADDITIONAL PART(S)  
RECOMMENDATION:**  
73399542R (pg. 7),  
73399547R (pg. 8),  
73399548R (pg. 7),  
73399577R (pg. 8)

## FEEDER PIVOT BRAKE STRIPPER MADE WITH HARDOX® 450



**REMAN#:** 87748011R  
**IF#:** IF111447JF

**DESCRIPTION:**  
Pivot Break Stripper

**MODEL FAMILY:**  
LARGE FRAME LEGACY & MIDRANGE

**MODEL FITMENT:**  
2388, 2577, 2588, 5088, 5130,  
5140, 5150, 6088, 6130, 6140, 6150,  
7088, 7130, 7140, 7150

**ADDITIONAL PART(S)  
RECOMMENDATION:**  
73399541R (pg. 7),  
73399588R (pg. 7)

## CHAIN TENSIONER MADE WITH HARDOX® 450



**REMAN#:** 84155550R

**DESCRIPTION:**  
Chain Tensioner Upgrade Kit

**MODEL FAMILY:**  
FLAGSHIP

**MODEL FITMENT:**  
7010, 7120, 7230, 7240, 8010,  
8120, 8230, 8240, 9010, 9120,  
9230, 9240



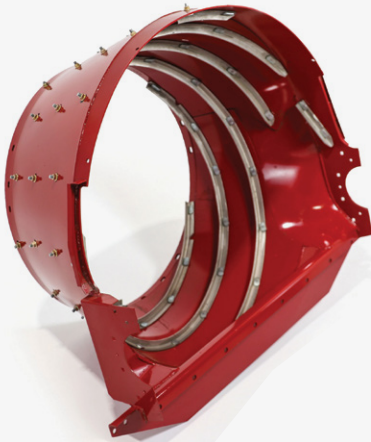
# ROTOR CAGE WEAR PARTS

At CNH Reman, we've got your back. Our Transport Rotor Wear parts, made with Hardox® 450, are tough enough to handle the most demanding harvesting conditions. They last longer, wear less, and keep your operation running smoothly. And best of all, they're affordable. Trust CNH Reman for parts that work as hard as you do.



- **Transition Cone** – Made with Hardox® 450
- **Transition Cone Liner Kit** – Made with Hardox® 450
- **Transition Cage Cover Liner Kit** – Made with Hardox® 450
- **Auger Grain Bed Liner** – Made with 14 Gauge Stainless Steel
- **Rotor Wear Parts** – Made with Hardox® 450
- **H-Frame Wear Parts** – Made with Hardox® 450

## TRANSITION CONE - MADE WITH HARDOX® 450



**REMAN#:** 47502121R  
**IF#:** IF1114575R

**DESCRIPTION:**  
Complete Reman Cone

**MODEL FAMILY:**  
LARGE FRAME LEGACY & MIDRANGE

**MODEL FITMENT:**  
2388, 2577, 2588, 5088, 5130, 5140,  
5150, 6088, 6130, 6140, 6150, 7088,  
7130, 7140, 7150

**ADDITIONAL PART(S)  
RECOMMENDATION:**  
73399560R (pg. 10)



**REMAN#:** 47843259R

**DESCRIPTION:**  
Complete Reman Extended  
Wear Transition Cone

**MODEL FAMILY:**  
FLAGSHIP

**MODEL FITMENT:**  
7010, 7120, 7230, 7240, 7250,  
8010, 8120, 8230, 8240, 8250,  
9010, 9120, 9230, 9240, 9250,  
AFX8010

**ADDITIONAL PART(S)  
RECOMMENDATION:**  
73399561R (pg. 11),  
87492652R (pg. 11),  
47550243R (pg. 10),  
73399558R (pg. 10)

# TRANSITION CONE LINER KIT - MADE WITH **HARDOX® 450**



**REMAN#:** 73399565R  
**IF#:** IF11L0075K

**DESCRIPTION:**  
Kit

**MODEL FAMILY:**  
LARGE FRAME LEGACY & MIDRANGE

**MODEL FITMENT:**  
2388, 2577, 2588, 5088, 5130,  
5140, 5150, 6088, 6130, 6140, 6150,  
7088, 7130, 7140, 7150

**ADDITIONAL PART(S)  
RECOMMENDATION:**  
73399560R (pg. 10)



**REMAN#:** 73399566R  
**IF#:** IF1445475K

**DESCRIPTION:**  
Liner Kit

**MODEL FAMILY:**  
FLAGSHIP

**MODEL FITMENT:**  
7010, 7120, 7230, 7240, 7250, 8010,  
8120, 8230, 8240, 8250, 9010, 9120,  
9230, 9240, 9250, AFX8010

**ADDITIONAL PART(S)  
RECOMMENDATION:**  
73399561R (pg. 11), 87492652R (pg. 11),  
47550243R (pg. 10), 73399558R (pg. 10)



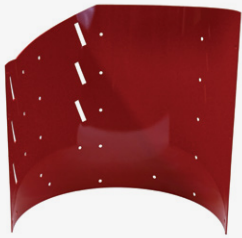
**REMAN#:** 73399584R  
**IF#:** IF1124475F

**DESCRIPTION:**  
Lip - Weldment - Rear Mount

**MODEL FAMILY:**  
FLAGSHIP

**MODEL FITMENT:**  
7010, 7120, 7230, 7240, 7250, 8010,  
8120, 8230, 8240, 8250, 9010, 9120,  
9230, 9240, 9250, AFX8010

# TRANSPORT CAGE COVER LINER KIT - MADE WITH **HARDOX® 450**

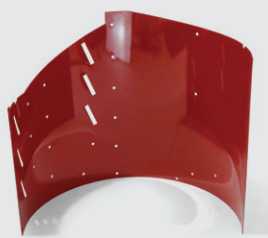


**REMAN#:** 73399559R  
**IF#:** IF1144474F

**DESCRIPTION:**  
Cover Liner Kit -  
Small Frame - Front

**MODEL FAMILY:**  
SMALL FRAME LEGACY

**MODEL FITMENT:**  
1440, 1460, 1640, 1644, 1660,  
1666, 2144, 2166, 2344, 2366



**REMAN#:** 73399560R  
**IF#:** IF11L4474F

**DESCRIPTION:**  
Front Cage Cover

**MODEL FAMILY:**  
LARGE FRAME LEGACY  
& MIDRANGE

**MODEL FITMENT:**  
1480, 1680, 1688, 2188, 2377,  
2388, 2577, 2588, 5088, 5130,  
5140, 5150, 6088, 6130, 6140,  
6150, 7088, 7130, 7140, 7150



**REMAN#:** 73399558R  
**IF#:** 1124474F

**DESCRIPTION:**  
Cover Liner Front

**MODEL FAMILY:**  
FLAGSHIP

**MODEL FITMENT:**  
7010, 7120, 7230, 7240, 7250,  
8010, 8120, 8230, 8240, 8250,  
9010, 9120, 9230, 9240, 9250,  
AFX8010



**REMAN#:** 47550238R  
sub to 47550243R  
**IF#:** IF115407FF

**DESCRIPTION:**  
Complete Transport Cage  
w/ Vanes

**MODEL FAMILY:**  
FLAGSHIP

**MODEL FITMENT:**  
7010, 7120, 7230, 7240, 8010,  
8120, 8230, 8240, 9010, 9120,  
9230, 9240, AFX8010

**ADDITIONAL PART(S)  
RECOMMENDATION:**  
73399558R

# AUGER GRAIN BED LINER MADE WITH 14 GAUGE STAINLESS STEEL

**REMAN#:** 73399549R  
**IF#:** IF1143B52F

**DESCRIPTION:**  
Inside - w/ Predrilled Holes and Rivets

**MODEL FAMILY:**  
LEGACY

**MODEL FITMENT:**  
1420, 1440, 1460, 1480, 1620, 1640, 1644,  
1660, 1666, 1670, 1680, 1688, 2144, 2166,  
2188, 2344, 2366, 2377, 2388, 2577, 2588,  
5088, 5130, 5140, 5150, 6088, 6130, 6140,  
6150, 7088, 7130, 7140, 7150

**ADDITIONAL PART(S) RECOMMENDATION:**  
73399550R (pg. 11)



**REMAN#:** 73399550R  
**IF#:** IF1143C52F

**DESCRIPTION:**  
Outside w/ Pre-drilled Holes and Rivets

**MODEL FAMILY:**  
LEGACY

**MODEL FITMENT:**  
1420, 1440, 1460, 1480, 1620, 1640, 1644,  
1660, 1666, 1670, 1680, 1688, 2144, 2166,  
2188, 2344, 2366, 2377, 2388, 2577, 2588,  
5088, 5130, 5140, 5150, 6088, 6130, 6140,  
6150, 7088, 7130, 7140, 7150

**ADDITIONAL PART(S) RECOMMENDATION:**  
73399549R (pg. 11)



## ROTOR WEAR PARTS - MADE WITH HARDOX® 450



**REMAN#:** 73399561R  
**IF#:** IF1440074F

**DESCRIPTION:**  
Rotor Cover Access Door Liner Kit

**MODEL FAMILY:**  
FLAGSHIP

**MODEL FITMENT:**  
7010, 7120, 7230, 7240, 7250,  
8010, 8120, 8230, 8240, 8250,  
9010, 9120, 9230, 9240,  
9250, AFX8010

**ADDITIONAL PART(S)  
RECOMMENDATION:**  
87492652R (pg. 11)



**REMAN#:** 87492652R

**DESCRIPTION:**  
Rotor Door Cover Front

**MODEL FAMILY:**  
FLAGSHIP

**MODEL FITMENT:**  
7010, 7120, 7230, 7240,  
7250, 8010, 8120, 8230, 8240,  
8250, 9010, 9120, 9230, 9240,  
9250, AFX8010

## H-FRAME WEAR PARTS - MADE WITH HARDOX® 450



**REMAN#:** 73399581R  
**IF#:** IF1440076F

**DESCRIPTION:**  
Weld-On - Front Curved Plate

**MODEL FAMILY:**  
FLAGSHIP

**MODEL FITMENT:**  
7010, 7120, 7230 (BSN  
YDG222000), 8010, 8120, 8230  
(BSN YDG222000),  
9010, 9120, 9230 (BSN  
YDG222000), AFX8010



**REMAN#:** 73399579R  
**IF#:** IF1364474F

**DESCRIPTION:**  
Weld In-Corner Plate

**MODEL FAMILY:**  
FLAGSHIP

**MODEL FITMENT:**  
7010, 7120, 7230, 7240,  
7250, 8010, 8120, 8230, 8240,  
8250, 9010, 9120, 9230, 9240,  
9250, AFX8010



**REMAN#:** 87705331R  
**IF#:** IF1364576R

**DESCRIPTION:**  
Module - Front- Concave

**MODEL FAMILY:**  
FLAGSHIP

**MODEL FITMENT:**  
7010, 7120, 7230  
(BSN YDG222000), 8010,  
8120, 8230 (BSN YDG222000),  
9010, 9120, 9230  
(BSN YDG222000), AFX8010

# GRAIN PAN WEAR PARTS

If you need reliable parts or wear parts for harvesting, consider CNH Reman's Separator Sieve Pans. These 16-gauge stainless steel pans can withstand intense vibrations and conditions, making them a game-changer for the grain separation process. They're efficient and durable, allowing for more productivity in less time. Give them a try for hassle-free harvesting.



## SEPARATOR SIEVE PAN - MADE WITH 16 GAUGE STAINLESS STEEL

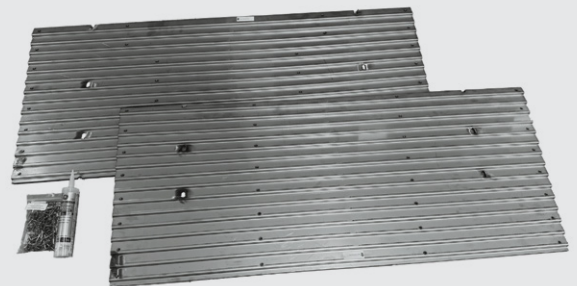


**REMAN#:** 73399572R  
**IF#:** IF112437GK

**DESCRIPTION:**  
2 Piece Kit

**MODEL FAMILY:**  
FLAGSHIP

**MODEL FITMENT:**  
7230, 7240, 7250, 8010, 8120, 8230, 8240, 8250,  
9010, 9120, 9230, 9240, 9250



**REMAN#:** 73399573R  
**IF#:** IF120437GK

**DESCRIPTION:**  
Narrow Frame Liner Kit - 2-piece

**MODEL FAMILY:**  
FLAGSHIP

**MODEL FITMENT:**  
7010, 7120

# CLEAN & RETURN GRAIN WEAR PARTS



If you want to make sure your combine is working at its best, you must take care of its grain handling systems. That's where CNH Reman comes in. We make Clean Grain and Return Grain Liner Kits that fit perfectly into your combine. They're made from high quality materials to withstand abrasion and wear. With these kits, you'll get better grain quality and faster separation.

- **Grain Tank Floor Liner Kit** – Made with 14 Gauge Stainless Steel
- **Sump Liner Kit** – Made with 14 Gauge Stainless Steel
- **Vertical Unload Liner Kit** – Made with Strenx® 110

## CLEAN GRAIN & RETURN LINER KIT MADE WITH 16 GAUGE STAINLESS STEEL

\*30 ASN YDG222000, 40, 50 SERIES



**REMAN#:** 73399522R  
**IF#:** IF12A3377F

**DESCRIPTION:**  
Clean Grain Return Grain 24"  
Liner Kit

**MODEL FAMILY:**  
FLAGSHIP

**MODEL FITMENT:**  
7230, 7240, 7250, 8230, 8240,  
8250, 9230, 9240, 9250

**ADDITIONAL PART(S)  
RECOMMENDATION:**  
73399500R (pg. 15)



**REMAN#:** 73399523R  
**IF#:** IF1102177K

**DESCRIPTION:**  
Clean Grain Return Grain Kit 69-1/2"  
Liner Kit

**MODEL FAMILY:**  
FLAGSHIP

**MODEL FITMENT:**  
7230, 7240, 7250, 8230, 8240,  
8250, 9230, 9240, 9250

**ADDITIONAL PART(S)  
RECOMMENDATION:**  
73399500R (pg. 15)



**REMAN#:** 73399529R  
**IF#:** IF12A3378K

**DESCRIPTION:**  
Clean Grain Only 24"  
Liner Kit

**MODEL FAMILY:**  
FLAGSHIP

**MODEL FITMENT:**  
7230, 7240, 7250, 8230, 8240,  
8250, 9230, 9240, 9250

**ADDITIONAL PART(S)  
RECOMMENDATION:**  
73399500R (pg. 15)



**REMAN#:** 73399530R  
**IF#:** IF1104378K

**DESCRIPTION:**  
Clean Grain Only 69-1/2"  
Liner Kit


**MODEL FAMILY:**  
FLAGSHIP

**MODEL FITMENT:**  
7230, 7240, 7250, 8230, 8240,  
8250, 9230, 9240, 9250

**ADDITIONAL PART(S)  
RECOMMENDATION:**  
73399500R (pg. 15)

# CLEAN GRAIN & RETURN LINER KIT MADE WITH 16 GAUGE STAINLESS STEEL

\*10, 20, 30 BSN YDG222000 SERIES




**REMAN#:** 73399521R  
**IF#:** IF12A3277F

**DESCRIPTION:**  
Clean Grain Return Grain  
24" Liner Kit

**MODEL FAMILY:**  
FLAGSHIP

**MODEL FITMENT:**  
7230, 8010, 8120, 8230,  
9010, 9120, 9230

**ADDITIONAL PART(S)  
RECOMMENDATION:**  
73399501R (pg. 15)




**REMAN#:** 73399525R  
**IF#:** IF1162177K

**DESCRIPTION:**  
Clean Grain Return Grain Kit 78-1/4"

**MODEL FAMILY:**  
FLAGSHIP

**MODEL FITMENT:**  
7230, 8010, 8120, 8230,  
9010, 9120, 9230

**ADDITIONAL PART(S)  
RECOMMENDATION:**  
73399501R (pg. 15)



**REMAN#:** 73399528R  
**IF#:** IF12A3278K

**DESCRIPTION:**  
Clean Grain Only 24" Liner Kit

**MODEL FAMILY:**  
FLAGSHIP

**MODEL FITMENT:**  
7230, 8010, 8120, 8230,  
9010, 9120, 9230

**ADDITIONAL PART(S)  
RECOMMENDATION:**  
73399501R (pg. 15)



**REMAN#:** 73399531R  
**IF#:** IF1163278K

**DESCRIPTION:**  
Clean Grain Only 78-1/4"


**MODEL FAMILY:**  
FLAGSHIP

**MODEL FITMENT:**  
7230, 8010, 8120, 8230,  
9010, 9120, 9230

**ADDITIONAL PART(S)  
RECOMMENDATION:**  
73399501R (pg. 15)

# CLEAN GRAIN & RETURN LINER KIT MADE WITH 16 GAUGE STAINLESS STEEL

\*10, 20 NARROW FRAME ONLY




**REMAN#:** 73399520R  
**IF#:** IF1202A77F

**DESCRIPTION:**  
Clean Grain Return  
Grain 24" Liner Kit

**MODEL FAMILY:**  
NARROW FRAME FLAGSHIP

**MODEL FITMENT:**  
7010, 7120

**ADDITIONAL PART(S)  
RECOMMENDATION:**  
73399501R (pg. 15)




**REMAN#:** 73399526R  
**IF#:** IF1202177K

**DESCRIPTION:**  
Clean Grain Return Grain Kit 68"

**MODEL FAMILY:**  
NARROW FRAME FLAGSHIP

**MODEL FITMENT:**  
7010, 7120

**ADDITIONAL PART(S)  
RECOMMENDATION:**  
73399501R (pg. 15)




**REMAN#:** 73399527R  
**IF#:** IF1202A78K

**DESCRIPTION:**  
Clean Grain Only 24" Liner Kit

**MODEL FAMILY:**  
NARROW FRAME FLAGSHIP

**MODEL FITMENT:**  
7010, 7120

**ADDITIONAL PART(S)  
RECOMMENDATION:**  
73399501R (pg. 15)



**REMAN#:** 73399587R  
**IF#:** IF1152078K

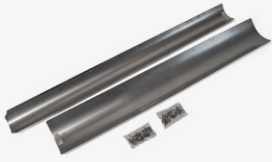
**DESCRIPTION:**  
Clean Grain Only Kit 68"

**MODEL FAMILY:**  
NARROW FRAME FLAGSHIP

**MODEL FITMENT:**  
7010, 7120

**ADDITIONAL PART(S)  
RECOMMENDATION:**  
73399501R (pg. 15)

## CLEAN GRAIN & RETURN GRAIN LINER KIT MADE WITH 16 GAUGE STAINLESS STEEL



**REMAN#:** 73399524R  
**IF#:** IF1110078K

**MODEL FAMILY:**  
MIDRANGE

**DESCRIPTION:**  
Stainless Steel Clean & Return Grain  
Liner Kit

**MODEL FITMENT:**  
5088, 5130, 5140, 5150, 6088,  
6130, 6140, 6150, 7088, 7130,  
7140, 7150

## CLEAN GRAIN AUGER TROUGH LINER KIT MADE WITH 16 GAUGE STAINLESS STEEL



**REMAN#:** 73399532R  
**IF#:** IF1142252F

**DESCRIPTION:**  
Clean Grain Auger Trough Liner 40" X 24"

**MODEL FAMILY:**  
SMALL FRAME LEGACY

**MODEL FITMENT:**  
1640, 1644, 1660, 1666, 2144, 2166,  
2344, 2366



**REMAN#:** 73399533R  
**IF#:** IF1142352F

**DESCRIPTION:**  
Clean Grain Auger Trough Liner 55"X 27"

**MODEL FAMILY:**  
LARGE FRAME LEGACY

**MODEL FITMENT:**  
1680, 1688, 2188, 2388, 2577, 2588

## AUGER CLEAN GRAIN SLEEVE MADE WITH MILD STEEL



**REMAN#:** 87751634R  
**IF#:** IF111417DF

**DESCRIPTION:**  
Clean Grain Auger Sleeve

**MODEL FAMILY:**  
MIDRANGE

**MODEL FITMENT:**  
5088, 5130, 5140, 5150,  
6088, 6130, 6140, 6150,  
7088, 7130, 7140, 7150

## CLEAN GRAIN LINER KIT - MADE WITH **HARDOX® 450**



**REMAN#:** 73399500R  
**IF#:** IF110417BK

**DESCRIPTION:**  
Late 30 (ASN YDG222000) 40, 50 Series Boot

**MODEL FAMILY:**  
FLAGSHIP

**MODEL FITMENT:**  
7230, 7240, 7250, 8230, 8240, 8250,  
9230, 9240, 9250



**REMAN#:** 73399501R  
**IF#:** IF112417BK

**DESCRIPTION:**  
10, 20, Early 30 (BSN YDG222000)  
Boot Liner Kit

**MODEL FAMILY:**  
FLAGSHIP

**MODEL FITMENT:**  
7010, 7120, 7230, 8010, 8120, 8230, 9010,  
9120, 9230, AFX8010



**REMAN#:** 48189965R

**DESCRIPTION:**  
Bottom Boot Flagship 30 (ASN: YDG222000),  
40, 50 Series Clean Grain Bottom Boot  
w/ Liner Kit Installed

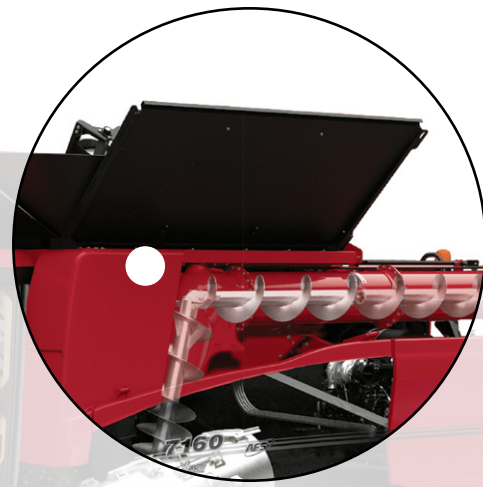
**MODEL FAMILY:**  
FLAGSHIP

**MODEL FITMENT:**  
7230 (ASN: YDG222000), 7240, 7250, 8230  
(ASN: YDG222000), 8240, 8250, 9230  
(ASN: YDG222000), 9240, 9250

**ADDITIONAL PART(S) RECOMMENDATION:**  
73399536R (pg. 16), 73399537R (pg. 17),  
73399523R (pg. 13), 73399530R (pg. 13),  
73399522R (pg. 13), 73399529R (pg. 13)

# GRAIN ELEVATOR WEAR PARTS

At CNH Reman, we offer top-quality Elevator Liner Kits and Elevator Door Hinges crafted from robust Hardox® 450 steel. Our Clean Grain Elevator Liner Kits are made from durable 16-gauge stainless steel, maintaining grain quality while withstanding the abrasive nature of the harvest. Trust CNH Reman for premium-grade elevator components that promise longevity and reliability, ensuring your harvest proceeds seamlessly.



- **Clean Grain Elevator Liner Kit** – Made with 16 Gauge Stainless Steel
- **Elevator Door Hinge** – Made with Hardox® 450
- **Elevator Liner Kit** – Made with Hardox® 450

## CLEAN GRAIN ELEVATOR LINER KIT MADE WITH 16 GAUGE STAINLESS STEEL



**REMAN#:** 73399534R  
**IF#:** IF1114152K

**DESCRIPTION:**  
Midrange 2 Pieces - Up & Down

**MODEL FAMILY:**  
MIDRANGE

**MODEL FITMENT:**  
5088, 5130, 5140, 5150,  
6088, 6130, 6140, 6150,  
7088, 7130, 7140, 7150



**REMAN#:** 73399536R  
**IF#:** IF1124178K

**DESCRIPTION:**  
Flagship Kit- Weld In-Upside

**MODEL FAMILY:**  
FLAGSHIP

**MODEL FITMENT:**  
7010, 7120, 7230, 7240, 7250,  
8010, 8120, 8230, 8240, 8250,  
9010, 9120, 9230, 9240, 9250

**ADDITIONAL PART(S)  
RECOMMENDATION:**  
73399537R (pg. 17)



**REMAN#:** 73399538R  
**IF#:** IF1234152F

**DESCRIPTION:**  
Large Frame Weld In - Set of 2

**MODEL FAMILY:**  
LARGE FRAME LEGACY

**MODEL FITMENT:**  
1680, 1682, 1688, 2188,  
2377, 2388, 2577, 2588



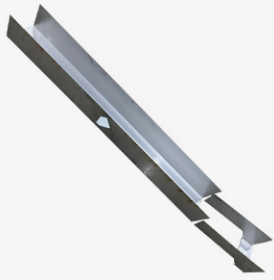
**REMAN#:** 73399539R  
**IF#:** IF1412278F

**DESCRIPTION:**  
Small Frame Weld In - Set of 2

**MODEL FAMILY:**  
SMALL FRAME LEGACY

**MODEL FITMENT:**  
1640, 1644, 1660, 1666,  
2144, 2166, 2344, 2366





**REMAN#:** 73399537R  
**IF#:** IF1124179K

**DESCRIPTION:**  
Weld In - Downside, Flagship Kit

**MODEL FAMILY:**  
FLAGSHIP

**MODEL FITMENT:**  
7010, 7120, 7230, 7240, 7250,  
8010, 8120, 8230, 8240, 8250,  
9010, 9120, 9230, 9240, 9250

**ADDITIONAL PART(S)  
RECOMMENDATION:**  
73399536R

## ELEVATOR DOOR HINGE - MADE WITH **HARDOX® 450**



**REMAN#:** 73399576R  
**IF#:** IF1124174F

**DESCRIPTION:**  
Elevator Head Door Hinge Pin Reinforcement Plate

**MODEL FAMILY:**  
FLAGSHIP

**MODEL FITMENT:**  
7010, 7120, 7230, 7240, 7250,  
8010, 8120, 8230, 8240, 8250,  
9010, 9120, 9230, 9240, 9250

## ELEVATOR LINER KIT - MADE WITH **HARDOX® 450**



**REMAN#:** 73399555R  
**IF#:** IF111417AK

**DESCRIPTION:**  
Head Kit- Weld-In - 9 Piece

**MODEL FAMILY:**  
MIDRANGE

**MODEL FITMENT:**  
5088, 5130, 5140, 5150, 6088,  
6130, 6140, 6150, 7088, 7130,  
7140, 7150

**ADDITIONAL PART(S)  
RECOMMENDATION:**  
73399534R (pg. 16)



**REMAN#:** 73399556R  
**IF#:** IF1124154K

**DESCRIPTION:**  
Top Head Kit- Weld-In - 7 Piece

**MODEL FAMILY:**  
FLAGSHIP

**MODEL FITMENT:**  
7010, 7120, 7230, 7240, 7250,  
8010, 8120, 8230, 8240, 8250,  
9010, 9120, 9230, 9240, 9250

**ADDITIONAL PART(S)  
RECOMMENDATION:**  
73399536R (pg. 16), 73399537R (pg. 17)



**REMAN#:** 84258176R

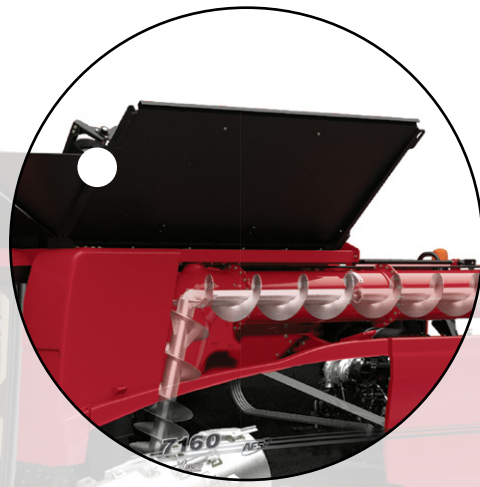
**DESCRIPTION:**  
Elevator Head Extended Wear Midrange

**MODEL FAMILY:**  
MIDRANGE

**MODEL FITMENT:**  
5088, 5130, 5140, 5150,  
6088, 6130, 6140, 6150,  
7088, 7130, 7140, 7150

# BUBBLE UP WEAR PARTS

In order to keep your combine running smoothly, you need your Bubble-Up housing system working just right. CNH Reman has the solution. Ihle liners are made with high-quality steel designed to fit tightly against the housing, protecting it and lengthening the life span. All hardware needed for the job is provided. No more worrying about grain flow being interrupted during harvest - these liners keep everything moving like they should.



## BUBBLE UP LINER WITH BOLT KIT - MADE WITH 12 GAUGE STEEL



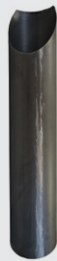
**REMAN#:** 73399502R  
**IF#:** IF1100050K

**DESCRIPTION:**  
W/ Bolt Kit

**MODEL FAMILY:**  
FLAGSHIP

**MODEL FITMENT:**  
7240, 7250, 8240, 8250,  
9240, 9250

**ADDITIONAL PART(S)  
RECOMMENDATION:**  
51620445R (pg. 18)



**REMAN#:** 73399503R  
**IF#:** IF1113250K

**DESCRIPTION:**  
W/ Bolt Kit

**MODEL FAMILY:**  
MIDRANGE

**MODEL FITMENT:**  
5088, 5130, 5140, 6088,  
6130, 6140, 6088, 6130,  
6140, 7088, 7130, 7140



**REMAN#:** 73399504R  
**IF#:** IF1113350K

**DESCRIPTION:**  
W/ Bolt Kit

**MODEL FAMILY:**  
MIDRANGE

**MODEL FITMENT:**  
5140, 5150, 6140, 6150,  
7140, 7150



**REMAN#:** 73399506R  
**IF#:** IF1130050K

**DESCRIPTION:**  
W/ Bolt Kit

**MODEL FAMILY:**  
FLAGSHIP

**MODEL FITMENT:**  
7230, 8230, 9230

**ADDITIONAL PART(S)  
RECOMMENDATION:**  
51620445R (pg. 18)

## BUBBLE UP LINER WITH BOLT KIT - MADE WITH 12 GAUGE STEEL



**REMAN#:** 73399505R  
**IF#:** IF1121650K

**DESCRIPTION:**  
With Bolt Kit

**MODEL FAMILY:**  
FLAGSHIP

**MODEL FITMENT:**  
7010, 7120, 7230, 8010, 8120, 8230,  
9010, 9120, 9230

**ADDITIONAL PART(S) RECOMMENDATION:**  
51620445R

## BUBBLE UP AUGER



**REMAN#:** 51620445R  
**IF#:** IF1120064F

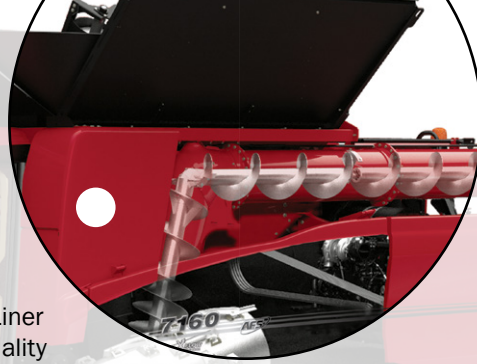
**DESCRIPTION:**  
Ultra-Flight Extended Wear Bubble-Up Auger

**MODEL FAMILY:**  
FLAGSHIP

**MODEL FITMENT:**  
5140, 5150, 6140, 6150, 7010, 7120, 7140, 7150, (ASN YFG014001)  
7230, 7240, 7250, 8010, 8120, 8230, 8240, 8250, 9010, 9120,  
9230, 9240, 9250, AFX8010

**ADDITIONAL PART(S) RECOMMENDATION:**  
73399502R (pg. 18), 73399505R (pg. 18), 73399506R (pg. 18)

# GRAIN TANK WEAR PARTS



CNH Reman offers Grain Tank Floor Liner Kits, Sump Liner Kits, and Vertical Unload Liner Kits made from high-quality materials to ensure top-notch performance and durability of your combine. These kits are built to last and will protect your equipment from wear and tear, making sure your harvest season runs smoothly year after year.

- **Grain Tank Floor Liner Kit** – Made with 14 Gauge Stainless Steel
- **Sump Liner Kit** – Made with 14 Gauge Stainless Steel
- **Vertical Unload Liner Kit** – Made with Strenx® 110

## GRAIN TANK FLOOR LINER KIT MADE WITH 14 GAUGE STAINLESS STEEL



**REMAN#:** 73399553R  
**IF#:** IF1140052F

**DESCRIPTION:**  
Grain Tank 4 Piece Liner Kit  
Pre Drilled w/ Rivets

**MODEL FAMILY:**  
SMALL FRAME &  
LARGE FRAME LEGACY

**MODEL FITMENT:**  
1420, 1440, 1460, 1470,  
1480, 1620, 1640, 1644, 1660,  
1666, 1670, 1680, 1688, 2144,  
2166, 2188, 2366, 2377, 2388,  
2577, 2588

**ADDITIONAL PART(S)  
RECOMMENDATION:**  
73399582R (pg. 20), 73399570R  
(pg. 20), 73399569R (pg. 20)



**REMAN#:** 73399552R  
**IF#:** IF1114252F

**DESCRIPTION:**  
w/ Holes and Rivets - 90"

**MODEL FAMILY:**  
MIDRANGE

**MODEL FITMENT:**  
5088, 5130, 5140, 5150,  
6088, 6130, 6140, 6150,  
7088, 7130, 7140, 7150

**ADDITIONAL PART(S)  
RECOMMENDATION:**  
73399583R (pg. 20)



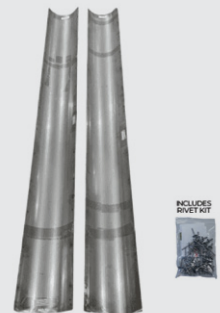
**REMAN#:** 73399554R  
**IF#:** IF1152452K

**DESCRIPTION:**  
w/ Pre-Drilled Holes  
and Rivets - Oversized

**MODEL FAMILY:**  
NARROW FRAME & EARLY FLAGSHIP

**MODEL FITMENT:**  
7010, 7120, 8010, 8120,  
9010, 9120

**ADDITIONAL PART(S)  
RECOMMENDATION:**  
73399583R (pg. 20)



**REMAN#:** 84182581R  
**IF#:** IF1154252K

**DESCRIPTION:**  
w/Pre-Drilled Holes and Rivets - 101

**MODEL FAMILY:**  
NARROW FRAME & EARLY FLAGSHIP

**MODEL FITMENT:**  
7010, 7120, 8010, 8120,  
9010, 9120

**ADDITIONAL PART(S)  
RECOMMENDATION:**  
73399583R (pg. 20)

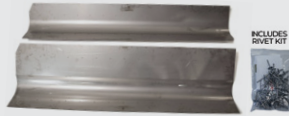


**REMAN#:** 87662984R  
**IF#:** IF1101252F

**DESCRIPTION:**  
Kit w/ Pre-Drilled Holes and Rivets

**MODEL FAMILY:**  
EARLY & LATE FLAGSHIP

**MODEL FITMENT:**  
7230, 7240, 7250, 8230, 8240,  
8250, 9230, 9240, 9250



**REMAN#:** 73399551R  
**IF#:** IF1102452K

**DESCRIPTION:**  
Kit w/ Pre-Drilled Holes  
and Rivets - Oversized

**MODEL FAMILY:**  
EARLY & LATE FLAGSHIP

**MODEL FITMENT:**  
7230, 7240, 7250, 8230, 8240,  
8250, 9230, 9240, 9250

## SUMP LINER KIT - MADE WITH 14 GAUGE STAINLESS STEEL



**REMAN#:** 73399582R  
**IF#:** IF1145171K

**DESCRIPTION:**  
Sump 4 Piece Liner Kit

**MODEL FAMILY:**  
SMALL & LARGE FRAME LEGACY

**MODEL FITMENT:**  
1420, 1440, 1460, 1470, 1480,  
1620, 1640, 1644, 1660, 1666,  
1670, 1680, 1688, 2144, 2166,  
2188, 2366, 2377, 2388,  
2577, 2588



**REMAN#:** 73399583R  
**IF#:** IF1175271K

**DESCRIPTION:**  
Strenx® 110 Sump Liner  
Kit For Standard Or Steel  
Unload Elbow

**MODEL FAMILY:**  
MIDRANGE, NARROW FRAME  
FLAGSHIP & EARLY FLAGSHIP

**MODEL FITMENT:**  
5088, 5130, 5140, 5150, 6088,  
6130, 6140, 6150, 7010, 7088,  
7120, 7130, 7140, 7150, 8010,  
8120, 9010, 9120

## VERTICAL UNLOAD LINER KIT MADE WITH STRENX® 110



**REMAN#:** 73399569R  
**IF#:** IF1143051F

**DESCRIPTION:**  
Weld In Top Vertical Liner

**MODEL FAMILY:**  
SMALL & LARGE FRAME LEGACY

**MODEL FITMENT:**  
1420, 1440, 1460, 1470, 1480, 1620, 1640,  
1644, 1660, 1666, 1670, 1680, 1688, 2144,  
2166, 2188, 2366, 2377, 2388, 2577, 2588

**ADDITIONAL PART(S)  
RECOMMENDATION:**  
73399570R (pg. 20), 73399582R (pg. 20)



**REMAN#:** 73399570R  
**IF#:** IF1143A51F

**DESCRIPTION:**  
Weld In Bottom Vertical Liner

**MODEL FAMILY:**  
SMALL & LARGE FRAME LEGACY

**MODEL FITMENT:**  
1420, 1440, 1460, 1470, 1480, 1620, 1640,  
1644, 1660, 1666, 1670, 1680, 1688, 2144,  
2166, 2188, 2366, 2377, 2388, 2577, 2588

**ADDITIONAL PART(S)  
RECOMMENDATION:**  
73399569R (pg. 20), 73399582R (pg. 20)

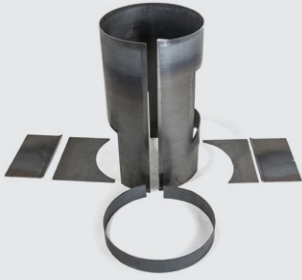


**REMAN#:** 73399585R  
**IF#:** IF1000073F

**DESCRIPTION:**  
Vertical Unload Repair  
Ring Liner Kit

**MODEL FAMILY:**  
MIDRANGE, NARROW FRAME FLAGSHIP  
& EARLY FLAGSHIP

**MODEL FITMENT:**  
5088, 5130, 5140, 5150, 6088, 6130, 6140,  
6150, 7010, 7088, 7120, 7130, 7140, 7150,  
8010, 8120, 9010, 9120



**REMAN#:** 73399568R  
**IF#:** IF1120051K

**DESCRIPTION:**  
Kit for Steel or Standard  
Capacity Unload Elbow

**MODEL FAMILY:**  
MIDRANGE, NARROW FRAME FLAGSHIP  
& EARLY FLAGSHIP

**MODEL FITMENT:**  
5088, 5130, 5140, 5150, 6088, 6130, 6140,  
6150, 7010, 7088, 7120, 7130, 7140, 7150,  
8010, 8120, 9010, 9120



**REMAN#:** 73399567R  
**IF#:** IF1100051K

**DESCRIPTION:**  
Kit for Cast Unload Elbow or High Capacity  
Unload Elbow- 5 Piece

**MODEL FAMILY:**  
EARLY & LATE FLAGSHIP

**MODEL FITMENT:**  
7230, 7240, 7250, 8230, 8240, 8250, 9230,  
9240, 9250



**REMAN#:** 73399586R  
**IF#:** IF1143E70F

**DESCRIPTION:**  
Unload Speed Up Sprocket - 60 Chain x 32 Tooth

**MODEL FAMILY:**  
LARGE FRAME LEGACY

**MODEL FITMENT:**  
2588



**REMAN#:** 192475C3R

**DESCRIPTION:**  
Bottom Vertical Unload Auger Tube w/ Strenx®  
110XF Liner & Sump Liner Kit Installed

**MODEL FAMILY:**  
LARGE FRAME LEGACY

**MODEL FITMENT:**  
1420, 1440, 1460, 1470, 1480, 1620, 1640,  
1644, 1660, 1666, 1670, 1680, 1688, 2144,  
2166, 2188, 2366, 2377, 2388, 2577, 2588

**ADDITIONAL PART(S)  
RECOMMENDATION:**  
73399569R (pg. 20), 73399553R (pg. 19)



**REMAN#:** 51427981R

**DESCRIPTION:**  
Vertical Unload Augers for  
Cast Elbow Extended Wear

**MODEL FAMILY:**  
FLAGSHIP

**MODEL FITMENT:**  
7230, 7240, 7250, 8230, 8240, 8250, 9230,  
9240, 9250

**ADDITIONAL PART(S)  
RECOMMENDATION:**  
73399567R (pg. 21)



**REMAN#:** 87733266R

**DESCRIPTION:**  
Vertical Unload Augers for Steel Elbow

**MODEL FAMILY:**  
MIDRANGE & EARLY FLAGSHIP

**MODEL FITMENT:**  
5088, 5130, 5140, 5150, 6088, 6130, 6140,  
6150, 7010, 7088, 7120, 7130, 7140, 7150,  
8010, 8120, 9010, 9120

**ADDITIONAL PART(S)  
RECOMMENDATION:**  
73399568R (pg. 21)

# AUGER WEAR PARTS

Handling grain efficiently is crucial for harvest. One way to ensure minimal grain loss is by installing CNH Reman Auger Unload Tubes and Extension Tubes. They're made with durable materials that can handle continuous use while maintaining grain quality. These tubes make unloading smoother and reduce the risk of blockages, which helps to increase productivity in the field.



- **Auger Unload Tube** – Made with 11 & 12 Gauge Stainless Steel
- **Auger Extension Tube** – Made with 11 Gauge Stainless Steel

## AUGER UNLOAD TUBE - MADE WITH 11 & 12 GAUGE STEEL



**REMAN#:** 87743673R  
**IF#:** IF1122E55F

**DESCRIPTION:**  
198-1/4"

**MODEL FAMILY:**  
MIDRANGE & FLAGSHIP

**MODEL FITMENT:**  
5088, 5130, 5140, 5150, 6088,  
6130, 6140, 6150, 7010, 7088,  
7120, 7130, 7140, 7150, 8010,  
8120, 9010, 9120, AFX8010

**ADDITIONAL PART(S)  
RECOMMENDATION:**  
84240125R (pg. 23), 87470153R  
(pg. 23), 87471943R (pg. 23),  
84261030R (pg. 23)



**REMAN#:** 47405760R  
**IF#:** IF11K0055F

**DESCRIPTION:**  
194-7/8"

**MODEL FAMILY:**  
MIDRANGE & FLAGSHIP

**MODEL FITMENT:**  
7230, 7240, 7250, 8230,  
8240, 8250, 9230, 9240, 9250

**ADDITIONAL PART(S)  
RECOMMENDATION:**  
47607473R (pg. 23), 84536432R  
(pg. 23), 84547988R (pg. 23)



**REMAN#:** 87470158R

**DESCRIPTION:**  
198 - 1/4"

**MODEL FAMILY:**  
FLAGSHIP

**MODEL FITMENT:**  
7010, 8010



**REMAN#:** 47407783R

**DESCRIPTION:**  
Unload Tube Outer for  
Folding Auger; 14 Gauge  
50 Grade Steel

**MODEL FAMILY:**  
FLAGSHIP

**MODEL FITMENT:**  
7230, 7240, 7250, 8230, 8240,  
8250, 9230, 9240, 9250

## AUGER EXTENSION TUBE - MADE WITH 11 GAUGE STEEL



**REMAN#:** 87470153R  
**IF#:** IF12B4B55F

**DESCRIPTION:**  
3' tube w/ Door

**MODEL FAMILY:**  
MIDRANGE & FLAGSHIP

**MODEL FITMENT:**  
5088, 5130, 5140, 5150, 6088,  
6130, 6140, 6150, 7010, 7088,  
7120, 7130, 7140, 7150, 8010,  
8120, 9010, 9120

**ADDITIONAL PART(S)  
RECOMMENDATION:**  
87743673R (pg. 22)



**REMAN#:** 84240125R  
**IF#:** IF1172C55F

**DESCRIPTION:**  
4' tube w/ Door

**MODEL FAMILY:**  
MIDRANGE & FLAGSHIP

**MODEL FITMENT:**  
5088, 5130, 5140, 5150, 6088,  
6130, 6140, 6150, 7010, 7088,  
7120, 7130, 7140, 7150, 8010,  
8120, 9010, 9120

**ADDITIONAL PART(S)  
RECOMMENDATION:**  
87743673R (pg. 22)



**REMAN#:** 87471943R  
**IF#:** IF12B5261K

**DESCRIPTION:**  
3' Extension Tube Kit

**MODEL FAMILY:**  
MIDRANGE & FLAGSHIP

**MODEL FITMENT:**  
5088, 5130, 5140, 5150, 6088,  
6130, 6140, 6150, 7010, 7088,  
7120, 7130, 7140, 7150, 8010,  
8120, 9010, 9120

**ADDITIONAL PART(S)  
RECOMMENDATION:**  
87743673R (pg. 22)



**REMAN#:** 84261030R  
**IF#:** IF12C5261K

**DESCRIPTION:**  
4' Extension Tube Kit

**MODEL FAMILY:**  
MIDRANGE & FLAGSHIP

**MODEL FITMENT:**  
5088, 5130, 5140, 5150, 6088,  
6130, 6140, 6150, 7010, 7088,  
7120, 7130, 7140, 7150, 8010,  
8120, 9010, 9120

**ADDITIONAL PART(S)  
RECOMMENDATION:**  
87743673R (pg. 22)

## AUGER EXTENSION TUBE - MADE WITH 11 GAUGE STEEL



**REMAN#:** 47607473R  
**IF#:** IF1102H55F

**DESCRIPTION:**  
Extension Tube 7'- Horizontal w/ door

**MODEL FAMILY:**  
FLAGSHIP

**MODEL FITMENT:**  
7230, 7240, 7250, 8230, 8240,  
8250, 9230, 9240, 9250

**ADDITIONAL PART(S)  
RECOMMENDATION:**  
47405760R (pg. 22)



**REMAN#:** 84536432R  
**IF#:** IF1104555F

**DESCRIPTION:**  
High Capacity w/ Cast Ring  
w/ Door - 5'

**MODEL FAMILY:**  
FLAGSHIP

**MODEL FITMENT:**  
7230, 7240, 7250, 8230, 8240,  
8250, 9230, 9240, 9250

**ADDITIONAL PART(S)  
RECOMMENDATION:**  
47405760R (pg. 22)



**REMAN#:** 84547988R  
**IF#:** IF12G5261K

**DESCRIPTION:**  
High Capacity Kit - 5'- Red Tube Kit

**MODEL FAMILY:**  
FLAGSHIP

**MODEL FITMENT:**  
7230, 7240, 7250, 8230, 8240,  
8250, 9230, 9240, 9250

**ADDITIONAL PART(S)  
RECOMMENDATION:**  
47405760R (pg. 22)

# TAILINGS WEAR PARTS

Managing the Tailings Processor effectively is important in ensuring your combine performs at its best during harvest season. CNH Reman has you covered with our Whale Tail Liner Kit and Chopper Body Knife Assemblies made of Hardox® 450 for durability and wear resistance. Our Tailings Processor Liner Kits made from 16-gauge stainless steel also enhance efficiency. Trust us to keep your combine's tailings system running smoothly for increased efficiency and less downtime.



- **Whale Tail Liner Kit**– Made with Hardox® 450
- **Tailings Processor Liner Kit**– Made with 16 Gauge Stainless Steel
- **Chopper Body Knife Assembly** – Made with Hardox® 450

## WHALE TALE LINER KIT - MADE WITH HARDOX® 450



**REMAN#:** 73399562R  
**IF#:** IF1103D54F

**DESCRIPTION:**  
Long Spreader

**MODEL FAMILY:**  
FLAGSHIP

**MODEL FITMENT:**  
7230, 7240, 7250, 8230, 8240,  
8250, 9230, 9240, 9250



**REMAN#:** 73399563R  
**IF#:** IF1153D54K

**DESCRIPTION:**  
Short Spreader

**MODEL FAMILY:**  
FLAGSHIP

**MODEL FITMENT:**  
7010, 7120, 8010, 8120, 9010, 9120



**REMAN#:** 73399564R  
**IF#:** IF1445475K

**DESCRIPTION:**  
Long Spreader

**MODEL FAMILY:**  
FLAGSHIP

**MODEL FITMENT:**  
7230, 8230, 9230

## TAILINGS PROCESSOR LINER KIT MADE WITH 16 GAUGE STAINLESS STEEL



**REMAN#:** 73399557R  
**IF#:** IF1444954K

**DESCRIPTION:**  
Pre-Fit & Pre-Cut, Weld-In Kit

**MODEL FAMILY:**  
FLAGSHIP

**MODEL FITMENT:**  
7010, 7120, 7230, 7240, 7250,  
8010, 8120, 8230, 8240, 8250,  
9010, 9120, 9230, 9240, 9250



# CHOPPER BODY KNIFE ASSEMBLY - MADE WITH HARDOX® 450



**REMAN#:** 73399571R  
**IF#:** IF1124E7FF

**DESCRIPTION:**  
Chopper Body Knife Assembly

**MODEL FAMILY:**  
FLAGSHIP

**MODEL FITMENT:**  
7010, 7120, 7230, 7240, 7250, 8010, 8120,  
8230, 8240, 8250, 9010, 9120, 9230, 9240,  
9250, AFX8010

## WE'VE GOT YOU COVERED

At CNH Reman, we understand as a farmer, you face various challenges during harvest season but we believe wear and tear, grain losses, decreased performance and increased maintenance costs should not be one of them. The impact that worn-out or unmaintained parts can have on your equipment's performance, efficiency, and productivity can be costly. That's why we have you covered from top to bottom. With our extensive expertise and dedication to innovation, we offer a wide range of wear parts solutions designed for superior maintenance of combine, enhancing efficiency, which can increase your farm's productivity and reduces the cost of ownership.

### What Is The Main Risk In The Combine Equipment?

The main risk to a combine is parts that are subject to significant wear and tear during the harvesting process not being maintained, in return causing a significant decrease in performance, efficiency, and productivity. When wear parts, such as feeder housings, auger tubes, transition cones, or other components, are not properly maintained, they can lead to several issues:

- **Reduced Cutting and Threshing Efficiency:** Worn-out or unmaintained cutting and threshing components due to wear and tear can result in reduced cutting and threshing performance, leaving valuable crops behind, and reducing overall efficiency.
- **Increased Grain Loss:** Worn or damaged parts can cause grain losses during harvesting by inaccurately separating the grain from the chaff, resulting in valuable crop loss and decreased yield.
- **Machinery Damage:** When worn parts are not replaced in a timely manner, they can cause additional stress on other components of the combine, leading to mechanical failures, breakdowns, and costly repairs.

- **Downtime and Increased Costs:** Breakdowns and malfunctions caused by worn parts can result in significant downtime during critical harvesting periods. This downtime delays the harvest and increases labor and repair costs.
- **Decreased Crop Quality:** Faulty or worn parts can damage crops during harvesting, leading to lower-quality grain. This can have a negative impact on market value, profitability, and customer satisfaction.

It is essential to regularly inspect, maintain, and replace wear parts to ensure optimal performance, minimize downtime, protect the quality and quantity of the crop, and maximize the lifespan of your harvesting combine



## BACKED BY OUR 24-MONTH WARRANTY

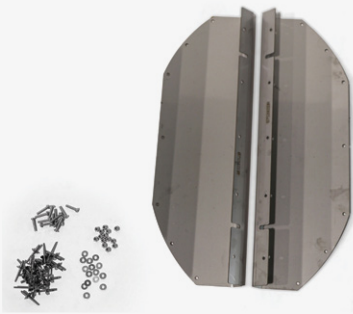
- ✓ Tested under real conditions
- ✓ Made by farmers

# CORN HEAD WEAR PARTS

When it comes to corn harvesting, you need a reliable and sturdy corn head for a good yield. CNH Reman's Corn Head Kits are made of strong 14-gauge steel and are designed to manage corn stalks and cobs effectively. They are durable and easy to integrate into your equipment for better performance.

- **Corn Head Kit** – Made with 14 Gauge Stainless Steel

## CORN HEAD KIT - MADE WITH 14 GAUGE STAINLESS STEEL



**REMAN#:** 87528033R  
**IF#:** IF13B4356K

**DESCRIPTION:**  
Stainless Steel Inner Row Repair Kit

**MODEL FITMENT:**  
2206, 2208, 2212, 240630, 240636, 240638, 240670, 240822, 240830, 240836, 240838, 240870, 241220, 241222, 241230, 320630, 320636, 320638, 320670, 320822, 320830, 320836, 320838, 320870, 321220, 321222, 321230, 340630, 340638, 340670, 340822, 340830, 340836, 340838, 340870, 341220, 341222, 341230



**REMAN#:** 73399574R  
**IF#:** IF1345456F

**DESCRIPTION:**  
Stainless Steel Left Wing Liner w/  
Holes & Rivets

**MODEL FITMENT:**  
4412F-30, 44122F 30

**ADDITIONAL PART(S)  
RECOMMENDATION:**  
73399575R (pg. 26)



**REMAN#:** 73399575R  
**IF#:** IF1355456F

**DESCRIPTION:**  
Stainless Steel Right Wing Liner w/  
Holes & Rivets

**MODEL FITMENT:**  
4412F-30, 44122F 30

**ADDITIONAL PART(S)  
RECOMMENDATION:**  
73399574R (pg. 26)



# PUTTING THE FARMER FIRST

## By choosing CNH Reman wear parts for your Case IH combine, you can unlock:

### ENHANCED PRODUCTIVITY

Our remanufactured wear parts enhance the performance of combines, leading to increased productivity and efficiency during harvest. You can expect improved cutting efficiency, threshing capability, and overall harvesting effectiveness, allowing you to maximize your yield.

### INCREASED EFFICIENCY

With our robust metals used in remanufacturing wear parts, you can combat the wear and tear challenges that affect combine performance. By protecting your equipment and preventing grain losses, you can optimize the efficiency of your harvesting operations, ultimately saving time and resources.

### REDUCED DOWNTIME

Our enhanced wear parts minimize the risk of breakdowns and malfunctions, reducing downtime during critical harvesting periods. You can rely on the reliability and longevity of our parts, ensuring smooth and uninterrupted operations.

### COST SAVINGS

Investing in CNH remanufactured wear parts provides you with a lower cost of ownership. Our parts' extended lifespan and durability means fewer replacements, reducing the overall maintenance and replacement costs associated with wear parts. This cost savings directly contributes to the profitability of your farming operations.

### IMPROVED GRAIN RETENTION

Properly maintained wear parts are vital in preventing grain losses during harvesting. Our remanufactured wear parts are enhanced to ensure superior grain retention, protecting the quality and quantity of the crop.

### EQUIPMENT PROTECTION

You can effectively decrease wear and tear challenges that impact your combine equipment by utilizing our wear parts. Our parts are enhanced with more robust metals, extending your equipment's service life and minimizing the need for costly repairs or replacements.

### OPTIMIZED PERFORMANCE

CNH Reman Wear Parts by Ihle Fabrications products are designed by farmers for farmers. They have been field-tested to ensure optimal performance and functionality. By choosing our enhanced remanufacture wear parts, you can trust that you are using industry-leading components proven to deliver exceptional results.

### TIME-SAVING

Our remanufactured drop-in ready wear parts, precision machining, and user-friendly design provide a simple repair solution, saving farmers valuable time and effort. With CNH Wear Parts by Ihle Fabrications, you can spend more time in the field and less time in the shop, maximizing operational efficiency.

### RELIABILITY

Our CNH Reman wear parts by Ihle Fabrications are backed by CNH Industrial, renowned for their reputation in the agricultural industry. You can have confidence in our parts' quality, reliability, and performance, ensuring and long-lasting performance.



PM-24043 01/2024

© 2024 CNH Industrial America LLC. All rights reserved. Case IH is a trademark registered in the United States and many other countries, owned by or licensed to CNH Industrial N.V., its subsidiaries or affiliates. Any trademarks referred to herein, in association with goods and/or services of companies other than CNH Industrial America LLC., are the property of those respective companies. CNH Industrial Reman is a trademark registered in the United States and many other countries, owned by or licensed to CNH Industrial N.V., its subsidiaries or affiliates. [www.caseih.com](http://www.caseih.com).

Copyright © 2024 | Ihle Fabrications, LLC