

IHLE FABRICATIONS LLC[®]

INSTALLATION INSTRUCTIONS

WARNING!!!
Warranty may be null and void
if you do not follow the
installation instructions.

TAILINGS PROCESSOR LINER KIT

CASE IH[®] FLAGSHIP

P/N: IF1444954K (73399557R)

All **Ihle Fabrications** products are made in the USA using the best materials to provide quality auger liner replacement parts. **Ihle Fabrications** a family-owned agriculture and fabrication business and stands behind our craftsmanship.



TOOLS NEEDED

Welder
Locking C-Clamps (9+)
Grinder

ITEMS INCLUDED

11 Liner Pieces

THANK YOU FOR YOUR BUSINESS

PH: 515-329-8050

WWW.IHLEFABRICATIONS.COM

4780 NW 158TH AVE.
POLK CITY, IA 50226

INSTALLATION INSTRUCTIONS

TAILINGS PROCESSOR LINER KIT

Step 1: Remove Processor housing from machine.

Step 2: Scrape or grind any debris or excessive welds that may prevent the liner from sitting flush against the vertical unload.

Step 3: Insert ALL liner pieces matching them to the housing as shown below. Clamp each piece flush.

NOTE: Ensure all pieces are in and fitted correctly before moving to Step 4.

Step 4: Tack weld each piece together and to the housing about every 4".

Step 5: Remove clamps. Stitch weld liner pieces together.

Step 6: As noted on the piece, if a sensor is present remove the cutout in liner 11.

Step 6: Piece #10 does NOT get welded, instead bolt in place. Follow instructions etched into the liner.

Step 7: Grind all seams smooth.

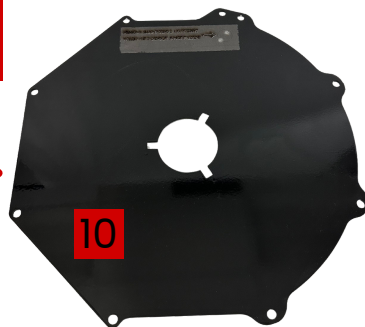
Step 8: Reassemble machine.

Step 9: Make sure both paddles rotate without touching the liners before starting the machine.

Step 10: If paddles are touching, grind a small amount off each paddle wheel if necessary.

NOTE: each part is etched with the part number. The last digit etched matches the image to the right.

NOT
welded



QUESTIONS?

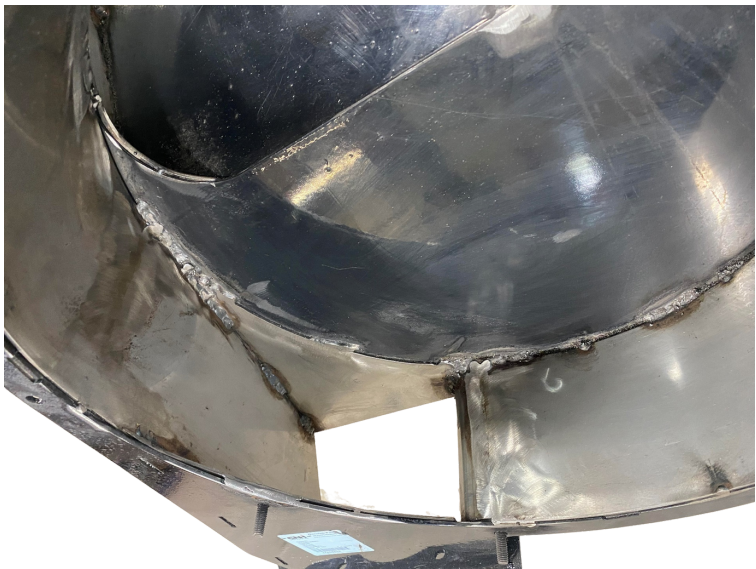
REACH OUT TO OUR TEAM



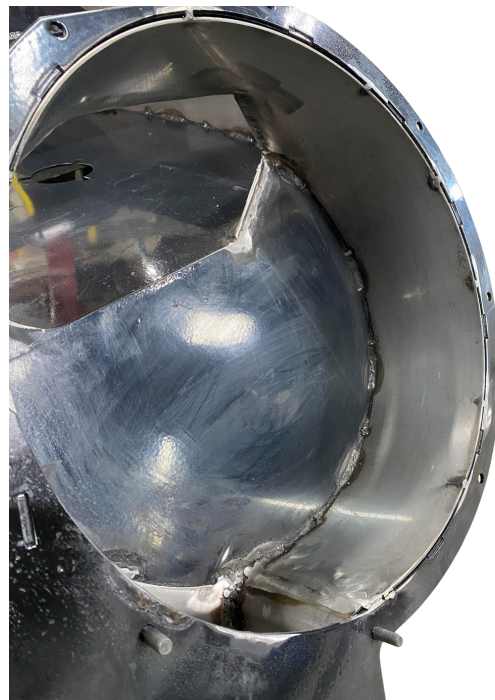
Liners clamped in place



Liners tack welded



Liners stitch welded



QUESTIONS?

WWW.IHLEFABRICATIONS.COM

REACH OUT TO OUR TEAM

P: 515-329-8050
E: INFO@IHLEFABRICATIONS.COM