

# IHLE FABRICATIONS LLC<sup>®</sup>

## INSTALLATION INSTRUCTIONS

### ROTOR FEED PLATE ASSEMBLY LINER KIT

#### CASE IH<sup>®</sup> FLAGSHIP SERIES

P/N: 73399594R

All **Ihle Fabrications** products are made in the USA using the best materials to provide quality auger liner replacement parts. **Ihle Fabrications** a family-owned agriculture and fabrication business and stands behind our craftsmanship.

#### WARNING!!!

Warranty may be null and void if you do not follow the installation instructions.



**HARDOX<sup>®</sup>**  
WEAR PLATE



#### TOOLS NEEDED

Welder  
Locking C-Clamps  
Grinder (if needed)

#### ITEMS INCLUDED

4 Liner Pieces

THANK YOU FOR YOUR BUSINESS

WWW.IHLEFABRICATIONS.COM

PH: 515-329-8050

4780 NW 158TH AVE.  
POLK CITY, IA 50226

## INSTALLATION INSTRUCTIONS

### ROTOR FEED PLATE ASSEMBLY LINER KIT

**STEP 1:** Pull out the feed plate assembly from your combine. Make sure plate is clean of debris.

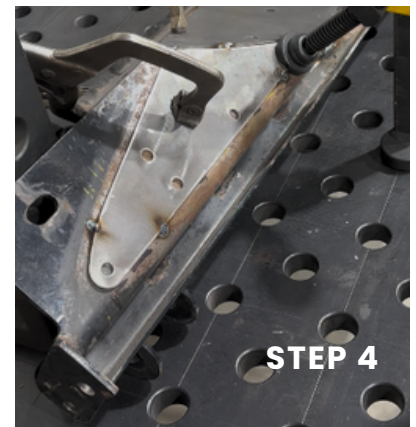
**STEP 2:** Lay the first conical piece on the feed plate and clamp into place.

**STEP 3:** Clamp both side pieces onto the original feed plate.

**STEP 4:** Clamp down the last lip piece to the feed plate.

**STEP 5:** Plug weld holes in the liners. For added strength, tack weld the liners on the outsides as well.

**STEP 6:** Reinstall your feed plate assembly and enjoy the added protection against the wear and tear of grain in your system this fall.



See Instructional Video on our Website.

**QUESTIONS?**

WWW.IHLEFABRICATIONS.COM

REACH OUT TO OUR TEAM

P: 515-329-8050

E: INFO@IHLEFABRICATIONS.COM